

# Codian MSE 8000

## Media Services Engine

### The Codian Difference

#### Mission Critical Conferencing

Designed to meet the tough requirements of ETSI/NEBS 3, this fault tolerant chassis has a system supervisor, hot swap feature blades and redundant monitored power supplies and cooling.

#### Flexible Performance

Provides between 40 and 360 ports of multipoint voice and video, up to 72 ISDN T1/E1 lines, or up to 90 ports of conference recording in a single chassis — bandwidths of up to 4Mbit/s per port adds up to more than 1Gbit/s of video conferencing.

#### Constant High Capacity

Universal Port technology supports any codec, any speed, any resolution, and any layout (including over 50 continuous presence multipoint layouts) on any port without loss of capacity or capability — greatly simplifying the planning, provisioning and scheduling of your conferences.

#### Standards Based and Compatible

Offers full interoperability with IP and ISDN networks, and proven compatibility with all major vendors, giving the flexibility to choose the best conferencing equipment for your environment and ensuring you connect every time.

#### Unrivalled Quality

Delivers a unique video stream for each participant, resulting in the best possible audio and video quality for the bandwidth and endpoint capabilities — resolutions up to 4CIF and 720p HD and the latest audio technology delivers exceptional voice and video clarity.

#### Scalable to Meet Future Needs

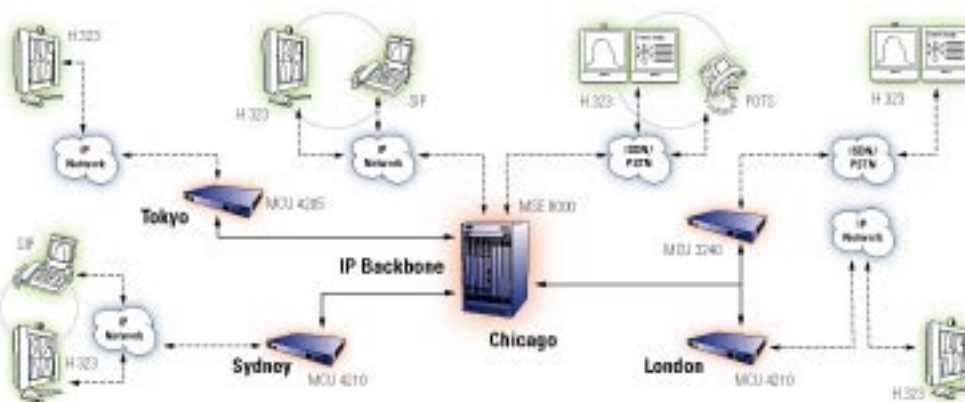
Latest chassis architecture allows upgrades and enhancements by installing new feature blades to give higher capacity, capabilities and support for future applications.



### Large Scale Voice and Video Communications Platform

The Media Services Engine (MSE) 8000 is a high capacity, carrier-class, voice and video conferencing chassis. This powerful, fault tolerant solution, is ideal for the large scale communication needs of services providers and commercial enterprises requiring a high-availability, high performance and scalable solution. The MSE 8000 represents another way in which Codian's video conferencing infrastructure solutions help you conduct business better, everyday.

### MSE 8000 Network



# MSE 8000 Series Specifications

## Chassis System Components

Part	Description
MSE 8000 Chassis	10 slot media services engine chassis with high speed backplane
MSE 8010 Fan tray	Hot-swap fan tray (for use in both top and bottom slots) with environmental monitoring
MSE 8020 PSU tray	Power supply tray to take up to 4 MSU 8021 PSU modules
MSU 8021 PSU module	100-240 VAC hot swappable power supplies to fit MSU 8020 PSU tray

## Option Blades

Part	Description
MSE 8050 Supervisor	Supervisor blade, required for system management and configuration
MSE 8420 Media 40	40 ports of video plus 40 ports of audio multipoint conference
MSE 8320 ISDN 8	8 ports E1 or T1 PRI ISDN
MSE 8220 VCR 10	10 ports of H.323 video recording with streaming server

### Chassis

10 hot swappable option slots  
 Redundant and hot-swap fan trays  
 Redundant and hot swappable power supplies  
 Dual 48 volt power option  
 Active environmental monitoring  
 High speed back plane and management bus

### Reliability

Fault-tolerant, high availability chassis  
 Hot swap option blades  
 System supervisor

### System Management

Comprehensive system management  
 RS-232 for local control and diagnostics  
 Syslog for diagnostics  
 Configurable event logs and full H.323 decoding  
 Configuration backup  
 Secure upgrades through Ethernet  
 SNMP and XML API for third party integration

### Security Features

Administrator, User and Guest passwords  
 Password protected conferences and streaming  
 DTMF passwords for H.323 endpoints  
 Secure non PC hardware and operating system  
 AES encryption, 128 bit key, H.235  
 Video Firewall Option

### Capacity

More than 1 Gbit/s of conferencing bandwidth  
 Up to 360 ports of video conferencing  
 Up to 72 ports of T1/E1 gateway  
 Up to 90 ports of video conference recording  
 No loss in port count due to IP bandwidth, resolution, codec or multipoint conference layout.

### Video

H.261, H.263, H.263+, H.263++, H.264  
 QCIF, QSIF, CIF, SIF, iCIF, iSIF, 4CIF, 4SIF, VGA, XGA, HD, 720p  
 Up to 30 frames or 60 fields per second  
 56kbit/s to 4Mbit/s  
 Universal transcoding and transrating

### Audio

G.711, G.722, G.728, G.729, G.723.1, G.722.1, Annex C, AAC, Polycom® Siren 14™  
 Audio transcoding

### Protocols

H.323 v4, SIP, H.320, H.221, BONDING (ISO 13871), H.239 (dual video), ftp, RTP, RTSP, HTTP, DHCP

### Multipoint Conferencing

H.323 dial in, or dial out from Web server • Stand alone or using Gatekeeper • Configurable audio and video Auto Attendant • Advanced Continuous Presence as standard • Automatic selection of best layout • Individual layout selection using remote control or Web pages • Over 50 custom layouts • Widescreen (16:9) support • Active speaker selection using remote control or voice activated • Floor assignment through Web page • Far end camera control tunnelling using remote control or Web • On-screen text messaging and site identification • Conference scheduling and reservation • On-demand and ad hoc conferences • Dual video using H.239 • Presentation mode: add slides from PC using VNC™ • Preview of conference and individual camera on Web pages

### Recording

From H.323 endpoint, MCU or Gateway  
 H.323 dial in, or dial out  
 Data from H.239 (dual video) capable endpoints  
 Record video at multiple bandwidths  
 Stream live, on demand, to a PC, H.323 playback

### Streaming

Embedded streaming server  
 H.261, H.263+, H.263++, H.264 video  
 Viewed using QuickTime™ and Windows Media Player™  
 Streaming of slides (H.239 and VNC™)  
 Stream live or recorded content  
 Stream at multiple bandwidths, unicast and multicast

### ISDN

Up to 8 ISDN PRI interfaces per option blade  
 Automatic downspeeding on loss of ISDN B channels  
 H.320 calls up to 768kbit/s  
 Total bandwidth and number of sites supported is limited only by ISDN capacity  
 Direct Inward Dialing (DID)  
 Interactive Voice Response (IVR) / Video Auto Attendant (AA) Default (Operator) extension  
 Call routing to MCU / multipoint conferencing bridge  
 Digit manipulation / flexible dial plan  
 Dial by E.164 address  
 Digit manipulation / flexible dial plan



[www.codian.com](http://www.codian.com)

### Codian Inc

1570 The Alameda #216  
 San Jose CA 95126 USA  
 Toll-free: 1-888-CODIAN-0  
 (1-888-263-4260)  
 Tel: (408) 938 2300  
 Fax: (408) 287 6630

### Codian Ltd

14 Waterside Drive  
 Langley  
 Slough SL3 6EZ  
 United Kingdom  
 Tel: +44 (0)1753 548 333  
 Fax: +44 (0)1753 548 303

### Codian (Asia Pacific) Ltd

Suite 1606, Saxon Tower  
 7 Cheung Shun Street  
 Cheung Sha Wan  
 Kowloon  
 Hong Kong  
 Tel: +852 3583 1430  
 Fax: +852 3583 1055

© Copyright 2006 Codian Ltd. All trademarks are the property of their respective owners  
 Not all features are available in the initial product release but will be made available through future software releases

